

TRG STEALTH
MIG/MAG UNIVERSAL SYSTEM



Welding Tools for the Professional

A Smart Approach

Parker Torchology is shaped by people with vision, a passion for improvement and a belief in delivering the very best Welding and Cutting Torch Range in the World.

We expect a great deal from our products, so we ask a lot of ourselves and our engineers.

Our mantra: **Innovation, Technology, Performance.**



DNA

Design and Engineering excellence are at the core of everything we do.

Every torch we build is driven by our relentless pursuit of perfection.

Premium Features

At Parker Torchology we do things differently, we strive to solve your problems with the perfect product to suit your needs. We create smart product features encased in cutting-edge design to ensure you always have the best tools to hand.





Production

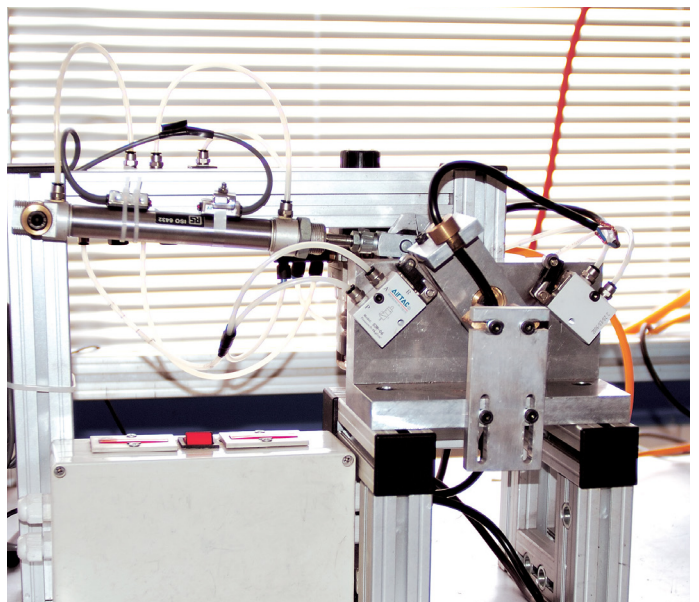
A fusion of precision production engineering, our bespoke processing techniques and a fanatical attention to detail ensures every welding torch we produce is worthy of the Parker Torchology name.

Testing, Testing, Testing

It takes patience to develop a new product, it's a lot more than a great idea.

Product development is an iterative process, trying something over and over, changing one small variable at a time.

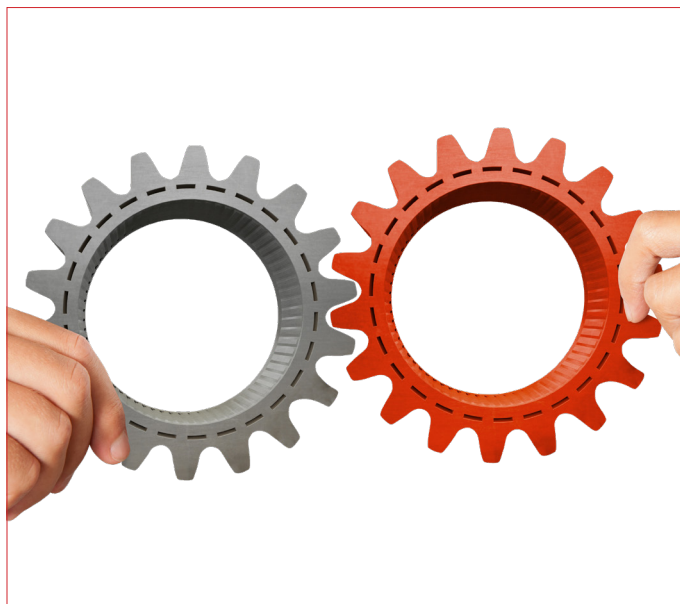
We build endless prototypes and test pieces that undergo months of rigorous testing. Only once a product has passed up to 88 different test procedures, with every single part tested separately do we consider our latest designs ready for market.



Partners

Our customers and business partners play a vital role in our development. With the core aim to strive together, we work with end-users, distributors and academic institutions alike.

As a result we share fundamental values in order to succeed in our respective market places, supporting economic growth and collaborative opportunities with others.



A Bright Future

Technology doesn't stand still, which is why we are constantly innovating to bring you the best products on the market.

Our strong vision and focused innovation strategy, not to mention our passion to revolutionize the industry, ensure that Parker Torchology is a byword for excellence.

We Talk Torches

Contents

TRG Stealth Mig/Mag Torch Range Features Focus	6
TRG Stealth Mig/Mag Torch Range Overview and Ratings	7

Torch Range

Air-Cooled

TR150	8
TR200	9
TR300	10
TR400	11

Wear Parts

Nozzles	12
Contact Tips	13
Diffusers	13
Retaining Head Assembly	13
Liners	14

Rear-End Spare Parts	15
Direct Plug Connector Kits	16

TRG Mig/Mag Torch Range

Air-Cooled Features Focus

The traditional North American TWC Series developed for high performance in heavy industrial environments.

Air-Cooled

Welding Tools for the Professional



100% Tweco® Compatibility Guaranteed

Quality Wear Parts

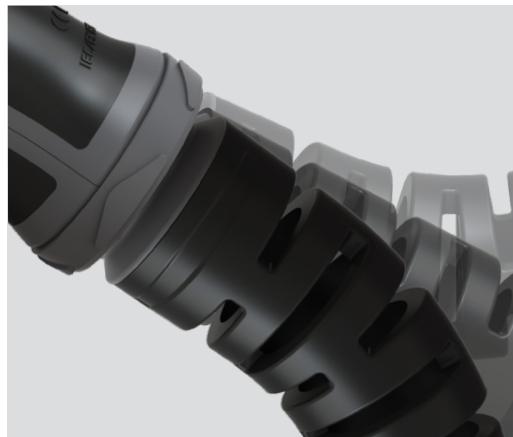
All wear parts are manufactured to the same specification as the original manufacturer ensuring reliability, longevity and superior performance

- Contact tips are manufactured from premium grade copper alloys; we don't sacrifice performance by using low end or recycled raw materials
- The correct specification of raw material type, surface finish, tensile strength and the coiling technology utilized to form the liner are all essential elements in achieving the correct manufacture of a liner

Superior Flexibility and Durability

Every detail has been considered to ensure the welder has the very best handling in all positions

- Improved balance and positionability with the addition of a knuckle joint which enables small movements of the handle and neck independently of the cable assembly



Terminations

A comprehensive range of USA style terminations ensures worldwide compatibility.

The Smart Way To Buy Welding and Cutting Tools



TRG Stealth Mig/Mag Torch Range

Ratings: 150 Amp to 270 Amp, Mixed Gas M21

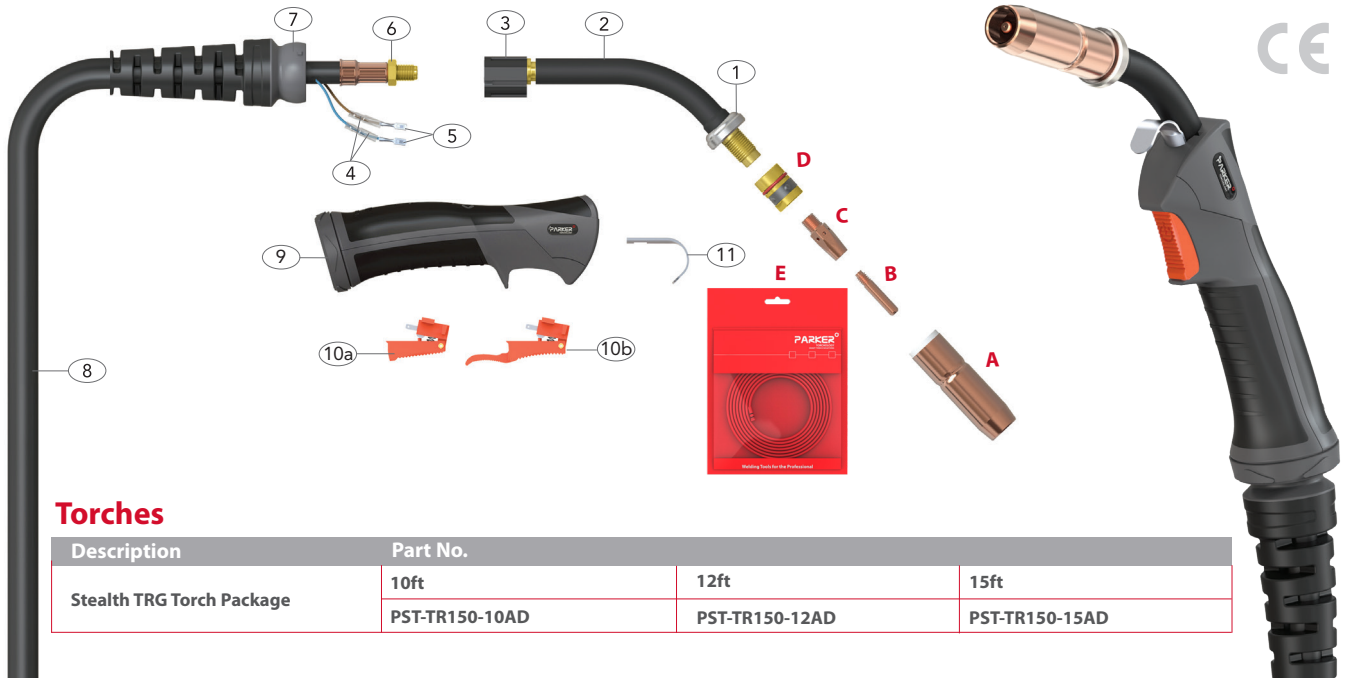


Model		TR150	TR200	TR300	TR400
Technical Data					
Cooling Method		Air-Cooled	Air-Cooled	Air-Cooled	Air-Cooled
Rating: CO ₂		180A	230A	260A	320A
Rating: Mixed Gas M21		150A	200A	230A	270A
Duty Cycle		60%	60%	60%	60%
Wire Size		0.8-1.2	0.8-1.2	0.8-1.2	0.8-1.2
Order Codes	10ft	PST-TR150-10AD	PST-TR200-10AD	PST-TR300-10AD	PST-TR400-10AD
	12ft	PST-TR150-12AD	PST-TR200-12AD	PST-TR300-12AD	PST-TR400-12AD
	15ft	PST-TR150-15AD	PST-TR200-15AD	PST-TR300-15AD	PST-TR400-15AD

TR150 Stealth Mig/Mag Torch Range

Rating: 180A CO₂ 150A mixed gas M21, EN60974-7 @ 60% duty cycle. 0.8 to 1.2mm / 0.023-0.045" wires

Air-Cooled Mig Welding Torch



Torches

Description	Part No.		
Stealth TRG Torch Package	10ft	12ft	15ft
	PST-TR150-10AD	PST-TR150-12AD	PST-TR150-15AD

Wear Parts

A Nozzles

Part No.	Description	Bore	Wall	Material
P401-4-38	1/8" RECESS TIP 3/8" Bore Nozzle	9.5	2.25mm	Copper
P401-4-50	1/8" RECESS TIP 1/2" Bore Nozzle	12.7	2.25mm	Copper
*P401-4-62	1/8" RECESS TIP 5/8" Bore Nozzle	16.0	2.25mm	Copper
P401-4-75	1/8" RECESS TIP 3/4" Bore Nozzle	19.5	2.25mm	Copper
P401-5-50	1/4" RECESS TIP 1/2" Bore Nozzle	12.7	2.4mm	Copper
*P401-5-62	1/4" RECESS TIP 5/8" Bore Nozzle	16.0	2.4mm	Copper
P401-5-75	1/4" RECESS TIP 3/4" Bore Nozzle	19.0	2.4mm	Copper
P401-6-50	1/8" RECESS TIP 1/2" Bore Nozzle	12.7	2.4mm	Copper
P401-6-62	1/8" RECESS TIP 5/8" Bore Nozzle	16.0	2.4mm	Copper
P401-6-75	1/8" RECESS TIP 3/4" Bore Nozzle	19.0	2.4mm	Copper

B Contact Tips

Part No.	Description	Material	Wire Size	
			mm	inch
P403-10	Contact Tip	Ecu	1.0	0.040
P403-23	Contact Tip	Ecu	0.6	0.023
P403-30	Contact Tip	Ecu	0.8	0.030
*P403-35	Contact Tip	Ecu	0.9	0.035
P403-45	Contact Tip	Ecu	1.2	0.045
P403-1-10	Contact Tip	Ecu	1.0	0.040
P403-1-30	Contact Tip	Ecu	0.8	0.030
P403-1-35	Contact Tip	Ecu	0.9	0.035
*P403-1-45	Contact Tip	Ecu	1.2	0.045

C Diffuser

Part No.	Description	Material
*P401	Gas Diffuser For Std Tip	Copper
P401-1	Gas Diffuser For H.D Tip	Copper

D Head

Part No.	Description	Material
*P402-3	Retaining Head Assembly	Brass
*P404-3	Retaining Head Assembly	Brass

E Liners

Part No.	Description	Length	Wire Size	
			mm	inch
P415-30-10B	Steel Liner x 10ft	3.80mt	0.8	0.030
P415-30-15B	Steel Liner x 15ft	4.90mt	0.8	0.030
P415-30-25B	Steel Liner x 25ft	8.10mt	0.8	0.030
*P415-35-10B	Steel Liner x 10ft	3.80mt	0.9-1.2	0.035-0.045
*P415-35-15B	Steel Liner x 15ft	4.90mt	0.9-1.2	0.035-0.045
P415-35-25B	Steel Liner x 25ft	8.10mt	0.9-1.2	0.035-0.045

Spare Parts

Part No.	Description
1 P402-5	Shock Washer Assembly
2 PLS-TRG200	Swan Neck Assembly
3 PG1515	Ergo Handle Location Body
4 PB1521-C	Cable Terminal Cover
5 PB1521	Cable Terminal
6 PB1505	Lock Nut
7 PG8015	Handle Cable Support c/w Ball Joint
8 PSTH113-10	Cable Assembly x 10ft
PSTH113-12	Cable Assembly x 12ft
PSTH113-15	Cable Assembly x 15ft
9 SGB2514	Handle And Lock Nut Assembly
10a DGB2516	Standard Trigger Assembly
10b DGB2516L	Extended Trigger Assembly
11 PB2517	Hanger Hook

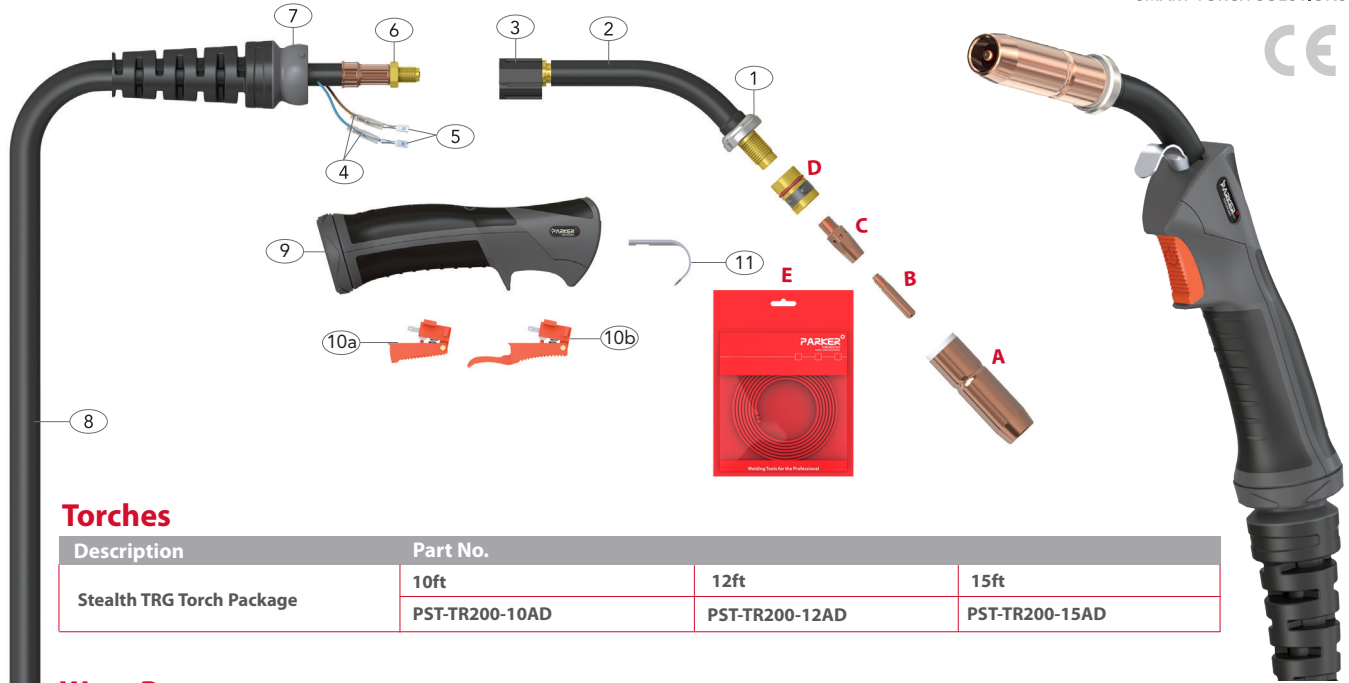
*Denotes torch package standard wear part set-up
For more information please refer to the following sections:
•Master Wear Parts Table Page 12-14
•Rear-End / Cable Parts Page 15

TR200 Stealth Mig/Mag Torch Range

Rating: 230A CO₂ 200A mixed gas M21, EN60974-7 @ 60% duty cycle. 0.8 to 1.2mm / 0.023-0.045" wires

Air-Cooled Mig Welding Torch

PARKER
TORCHOLOGY
SMART TORCH SOLUTIONS



Torches

Description	Part No.		
Stealth TRG Torch Package	10ft	12ft	15ft
	PST-TR200-10AD	PST-TR200-12AD	PST-TR200-15AD

Wear Parts

A Nozzles

Part No.	Description	Bore	Wall	Material
P401-4-38	1/8" RECESS TIP 3/8" Bore Nozzle	9.5	2.25mm	Copper
P401-4-50	1/8" RECESS TIP 1/2" Bore Nozzle	12.7	2.25mm	Copper
*P401-4-62	1/8" RECESS TIP 5/8" Bore Nozzle	16.0	2.25mm	Copper
P401-4-75	1/8" RECESS TIP 3/4" Bore Nozzle	19.5	2.25mm	Copper
P401-5-50	1/4" RECESS TIP 1/2" Bore Nozzle	12.7	2.4mm	Copper
*P401-5-62	1/4" RECESS TIP 5/8" Bore Nozzle	16.0	2.4mm	Copper
P401-5-75	1/4" RECESS TIP 3/4" Bore Nozzle	19.0	2.4mm	Copper
P401-6-50	1/8" RECESS TIP 1/2" Bore Nozzle	12.7	2.4mm	Copper
P401-6-62	1/8" RECESS TIP 5/8" Bore Nozzle	16.0	2.4mm	Copper
P401-6-75	1/8" RECESS TIP 3/4" Bore Nozzle	19.0	2.4mm	Copper

B Contact Tips

Part No.	Description	Material	Wire Size	
			mm	inch
P403-10	Contact Tip	Ecu	1.0	0.040
P403-23	Contact Tip	Ecu	0.6	0.023
P403-30	Contact Tip	Ecu	0.8	0.030
*P403-35	Contact Tip	Ecu	0.9	0.035
P403-45	Contact Tip	Ecu	1.2	0.045
P403-1-10	Contact Tip	Ecu	1.0	0.040
P403-1-30	Contact Tip	Ecu	0.8	0.030
P403-1-35	Contact Tip	Ecu	0.9	0.035
*P403-1-45	Contact Tip	Ecu	1.2	0.045

C Diffuser

Part No.	Description	Material
*P401	Gas Diffuser For Std Tip	Copper
P401-1	Gas Diffuser For H.D Tip	Copper

D Head

Part No.	Description	Material
*P402-3	Retaining Head Assembly	Brass
*P404-3	Retaining Head Assembly	Brass

E Liners

Part No.	Description	Length	Wire Size	
			mm	inch
P415-30-10B	Steel Liner x 10ft	3.80mt	0.8	0.030
P415-30-15B	Steel Liner x 15ft	4.90mt	0.8	0.030
P415-30-25B	Steel Liner x 25ft	8.10mt	0.8	0.030
*P415-35-10B	Steel Liner x 10ft	3.80mt	0.9-1.2	0.035-0.045
*P415-35-15B	Steel Liner x 15ft	4.90mt	0.9-1.2	0.035-0.045
P415-35-25B	Steel Liner x 25ft	8.10mt	0.9-1.2	0.035-0.045

Spare Parts

Part No.	Description
1 P402-5	Shock Washer Assembly
2 PLS-TRG200	Swan Neck Assembly
3 PG1515	Ergo Handle Location Body
4 PB1521-C	Cable Terminal Cover
5 PB1521	Cable Terminal
6 PB1505	Lock Nut
7 PG8015	Handle Cable Support c/w Ball Joint
8 PSTH213-10	Cable Assembly x 10ft
PSTH213-12	Cable Assembly x 12ft
PSTH213-15	Cable Assembly x 15ft
9 SGB2514	Handle And Lock Nut Assembly
10a DGB2516	Standard Trigger Assembly
10b DGB2516L	Extended Trigger Assembly
11 PB2517	Hanger Hook

*Denotes torch package standard wear part set-up
For more information please refer to the following sections:
• Master Wear Parts Table Page 12-14
• Rear-End / Cable Parts Page 15

TR300 Stealth Mig/Mag Torch Range

Rating: 260A CO₂ 230A mixed gas M21, EN60974-7 @ 60% duty cycle. 0.8 to 1.2mm / 0.023-0.045" wires

Air-Cooled Mig Welding Torch



Torches

Description	Part No.		
Stealth TRG Torch Package	10ft	12ft	15ft
	PST-TR300-10AD	PST-TR300-12AD	PST-TR300-15AD

Wear Parts

A Nozzles

Part No.	Description	Bore	Wall	Material
P401-4-38	1/8" RECESS TIP 3/8" Bore Nozzle	9.5	2.25mm	Copper
P401-4-50	1/8" RECESS TIP 1/2" Bore Nozzle	12.7	2.25mm	Copper
*P401-4-62	1/8" RECESS TIP 5/8" Bore Nozzle	16.0	2.25mm	Copper
P401-4-75	1/8" RECESS TIP 3/4" Bore Nozzle	19.5	2.25mm	Copper
P401-5-50	1/4" RECESS TIP 1/2" Bore Nozzle	12.7	2.4mm	Copper
*P401-5-62	1/4" RECESS TIP 5/8" Bore Nozzle	16.0	2.4mm	Copper
P401-5-75	1/4" RECESS TIP 3/4" Bore Nozzle	19.0	2.4mm	Copper
P401-6-50	1/8" RECESS TIP 1/2" Bore Nozzle	12.7	2.4mm	Copper
P401-6-62	1/8" RECESS TIP 5/8" Bore Nozzle	16.0	2.4mm	Copper
P401-6-75	1/8" RECESS TIP 3/4" Bore Nozzle	19.0	2.4mm	Copper

B Contact Tips

Part No.	Description	Material	Wire Size	
			mm	inch
P403-10	Contact Tip	Ecu	1.0	0.040
P403-23	Contact Tip	Ecu	0.6	0.023
P403-30	Contact Tip	Ecu	0.8	0.030
*P403-35	Contact Tip	Ecu	0.9	0.035
P403-45	Contact Tip	Ecu	1.2	0.045
P403-1-10	Contact Tip	Ecu	1.0	0.040
P403-1-30	Contact Tip	Ecu	0.8	0.030
P403-1-35	Contact Tip	Ecu	0.9	0.035
*P403-1-45	Contact Tip	Ecu	1.2	0.045

D Head

Part No.	Description	Material
*P404-3	Retaining Head Assembly	Brass

E Liners

Part No.	Description	Length	Wire Size	
			mm	inch
*P415-35-10B	Steel Liner x 10ft	3.80mt	0.9-1.2	0.035-0.045
*P415-35-15B	Steel Liner x 15ft	4.90mt	0.9-1.2	0.035-0.045
P415-35-25B	Steel Liner x 25ft	8.10mt	0.9-1.2	0.035-0.045

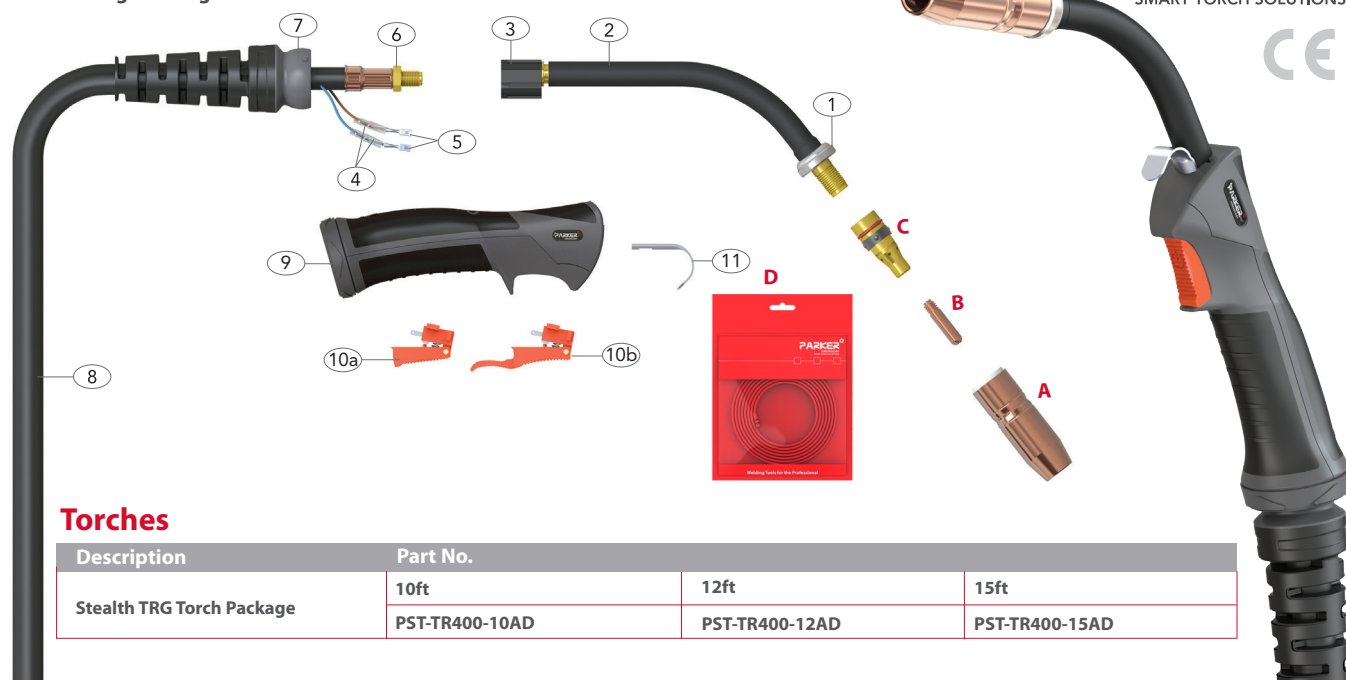
Spare Parts

Part No.	Description
1 P402-5	Shock Washer Assembly
2 PLS-TRG300	Swan Neck Assembly
3 PG1515	Ergo Handle Location Body
4 PB1521-C	Cable Terminal Cover
5 PB1521	Cable Terminal
6 PB1505	Lock Nut
7 PG8016	Handle Cable Support c/w Ball Joint
8 PSTH313-10	Cable Assembly x 10ft
PSTH313-12	Cable Assembly x 12ft
PSTH313-15	Cable Assembly x 15ft
9 SGB2514	Handle And Lock Nut Assembly
10a DGB2516	Standard Trigger Assembly
10b DGB2516L	Extended Trigger Assembly
11 PB2517	Hanger Hook

*Denotes torch package standard wear part set-up
For more information please refer to the following sections:
• Master Wear Parts Table Page 12-14
• Rear-End / Cable Parts Page 15

TR400 Stealth Mig/Mag Torch Range

Rating: 320A CO₂ 270A mixed gas M21, EN60974-7 @ 60% duty cycle. 0.8 to 1.2mm / 0.030-5/64" wires
Air-Cooled Mig Welding Torch



Torches

Description	Part No.		
Stealth TRG Torch Package	10ft	12ft	15ft
	PST-TR400-10AD	PST-TR400-12AD	PST-TR400-15AD

Wear Parts

A Nozzles

Part No.	Description	Bore	Wall	Material
P401-4-38	1/8" RECESS TIP 3/8" Bore Nozzle	9.5	2.25mm	Copper
P401-4-50	1/8" RECESS TIP 1/2" Bore Nozzle	12.7	2.25mm	Copper
*P401-4-62	1/8" RECESS TIP 5/8" Bore Nozzle	16.0	2.25mm	Copper
P401-4-75	1/8" RECESS TIP 3/4" Bore Nozzle	19.5	2.25mm	Copper
P401-5-50	1/4" RECESS TIP 1/2" Bore Nozzle	12.7	2.4mm	Copper
*P401-5-62	1/4" RECESS TIP 5/8" Bore Nozzle	16.0	2.4mm	Copper
P401-5-75	1/4" RECESS TIP 3/4" Bore Nozzle	19.0	2.4mm	Copper
P401-6-50	1/8" RECESS TIP 1/2" Bore Nozzle	12.7	2.4mm	Copper
P401-6-62	1/8" RECESS TIP 5/8" Bore Nozzle	16.0	2.4mm	Copper
P401-6-75	1/8" RECESS TIP 3/4" Bore Nozzle	19.0	2.4mm	Copper

B Contact Tips

Part No.	Description	Material	Wire Size	
			mm	inch
P403-10	Contact Tip	Ecu	1.0	0.040
P403-23	Contact Tip	Ecu	0.6	0.023
P403-30	Contact Tip	Ecu	0.8	0.030
*P403-35	Contact Tip	Ecu	0.9	0.035
P403-45	Contact Tip	Ecu	1.2	0.045
P403-1-10	Contact Tip	Ecu	1.0	0.040
P403-1-30	Contact Tip	Ecu	0.8	0.030
P403-1-35	Contact Tip	Ecu	0.9	0.035
*P403-1-45	Contact Tip	Ecu	1.2	0.045

D Head

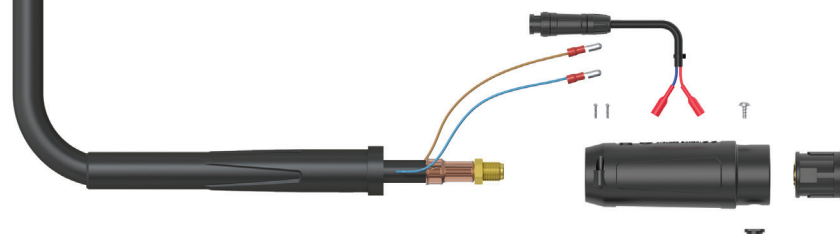
Part No.	Description	Material
*P404-3	Retaining Head Assembly	Brass

E Liners

Part No.	Description	Length	Wire Size	
			mm	inch
*P415-35-10B	Steel Liner x 10ft	3.80mt	0.9-1.2	0.035-0.045
*P415-35-15B	Steel Liner x 15ft	4.90mt	0.9-1.2	0.035-0.045
P415-35-25B	Steel Liner x 25ft	8.10mt	0.9-1.2	0.035-0.045

Spare Parts

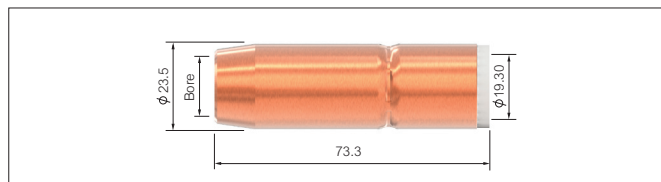
Part No.	Description
1 P402-5	Shock Washer Assembly
2 PLS-TRG400	Swan Neck Assembly
3 PG1515	Ergo Handle Location Body
4 PB1521-C	Cable Terminal Cover
5 PB1521	Cable Terminal
6 PB1505	Lock Nut
7 PG8016	Handle Cable Support c/w Ball Joint
8 PSTH413-10	Cable Assembly x 10ft
PSTH413-12	Cable Assembly x 12ft
PSTH413-15	Cable Assembly x 15ft
9 SGB2514	Handle And Lock Nut Assembly
10a DGB2516	Standard Trigger Assembly
10b DGB2516L	Extended Trigger Assembly
11 PB2517	Hanger Hook



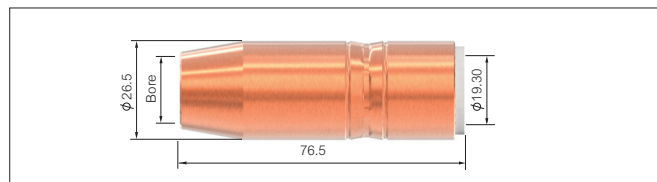
*Denotes torch package standard wear part set-up
For more information please refer to the following sections:
• Master Wear Parts Table Page 12-14
• Rear-End / Cable Parts Page 15

TR150/200/300/400

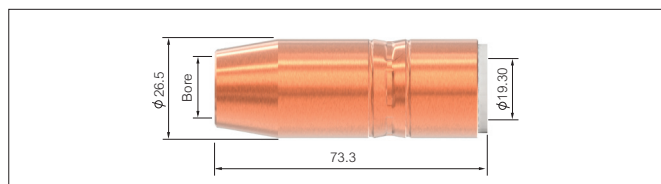
Part No.	Description	Bore	Wall	Material
P401-4-38	1/8" RECESS TIP 3/8" Bore Nozzle	9.50	2.25mm	Copper
P401-4-50	1/8" RECESS TIP 1/2" Bore Nozzle	12.7	2.25mm	Copper
* P401-4-62	1/8" RECESS TIP 5/8" Bore Nozzle	16.0	2.25mm	Copper
P401-4-75	1/8" RECESS TIP 3/4" Bore Nozzle	19.0	2.25mm	Copper



Part No.	Description	Bore	Wall	Material
P401-5-50	1/4" RECESS TIP 1/2" Bore Nozzle	12.7	2.40mm	Copper
* P401-5-62	1/4" RECESS TIP 5/8" Bore Nozzle	16.0	2.40mm	Copper
P401-5-75	1/4" RECESS TIP 3/4" Bore Nozzle	19.0	2.40mm	Copper



Part No.	Description	Bore	Wall	Material
P401-6-50	1/8" RECESS TIP 1/2" Bore Nozzle	12.7	2.40mm	Copper
P401-6-62	1/8" RECESS TIP 5/8" Bore Nozzle	16.0	2.40mm	Copper
P401-6-75	1/8" RECESS TIP 3/4" Bore Nozzle	19.0	2.40mm	Copper



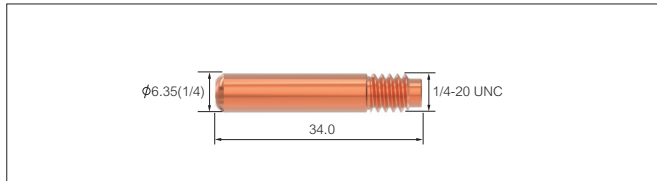
* Denotes torch package standard wear part set-up

Wear Parts

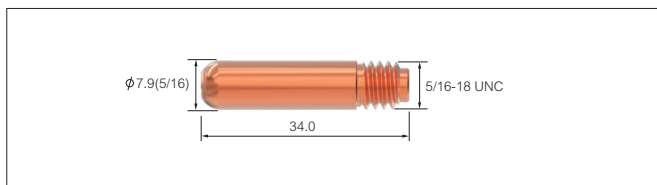
Contact Tips

TR150/200/300/400

Part No.	Description	Wire Size		Material
		MM	INCH	
P403-10	Contact Tip	1.0	0.040	Ecu
P403-23	Contact Tip	0.6	0.023	Ecu
P403-30	Contact Tip	0.8	0.030	Ecu
* P403-35	Contact Tip	0.9	0.035	Ecu
P403-45	Contact Tip	1.2	0.045	Ecu



Part No.	Description	Wire Size		Material
		MM	INCH	
P403-1-10	Contact Tip	1.0	0.040	Ecu
P403-1-30	Contact Tip	0.8	0.030	Ecu
P403-1-35	Contact Tip	0.9	0.035	Ecu
* P403-1-45	Contact Tip	1.2	0.045	Ecu

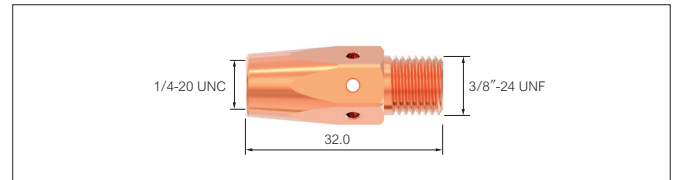


* Denotes torch package standard wear part set-up

Diffuser

TR150/200/300/400

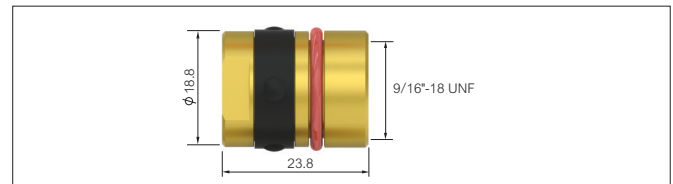
Part No.	Description	Bore	Material
* P404	Gas Diffuser For Std Tip		Copper
P404-1	Gas Diffuser For H.D Tip		Copper



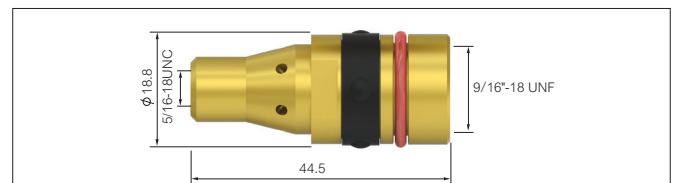
Retaining Head Assembly

TR150/200/300/400

Part No.	Description	Bore	Material
* P402-3	Retaining Head Assembly		Brass



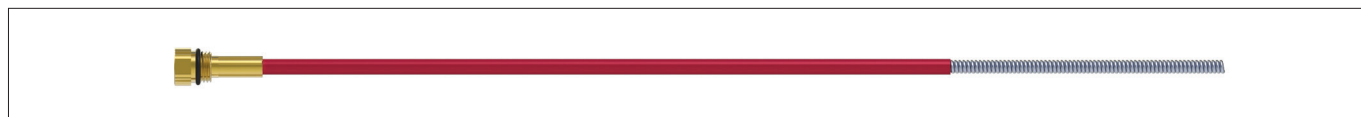
Part No.	Description	Bore	Material
* P404-3	Retaining Head Assembly		Brass



Liner Options 0.8mm

TR150/200

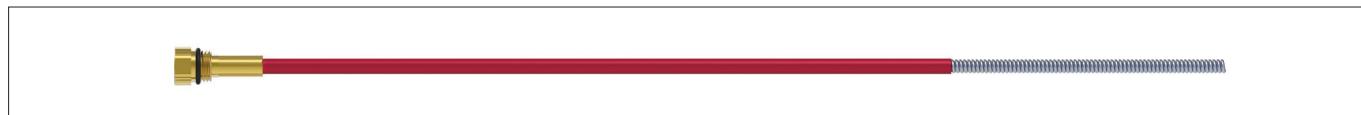
Part No.	Description	Length	Nipple	Wire Size	
				MM	INCH
P415-30-10B	Steel Liner x 10ft	3.80mt	Brass Nipple	0.8	0.030
P415-30-15B	Steel Liner x 15ft	4.90mt	Brass Nipple	0.8	0.030
P415-30-25B	Steel Liner x 25ft	8.10mt	Brass Nipple	0.8	0.030



Liner Options 0.9-1.2mm

TR150/200/300/400

Part No.	Description	Length	Nipple	Wire Size	
				MM	INCH
* P415-35-10B	Steel Liner x 10ft	3.80mt	Brass Nipple	0.9-1.2	0.035-0.045
* P415-35-15B	Steel Liner x 15ft	4.90mt	Brass Nipple	0.9-1.2	0.035-0.045
P415-35-25B	Steel Liner x 25ft	8.10mt	Brass Nipple	0.9-1.2	0.035-0.045

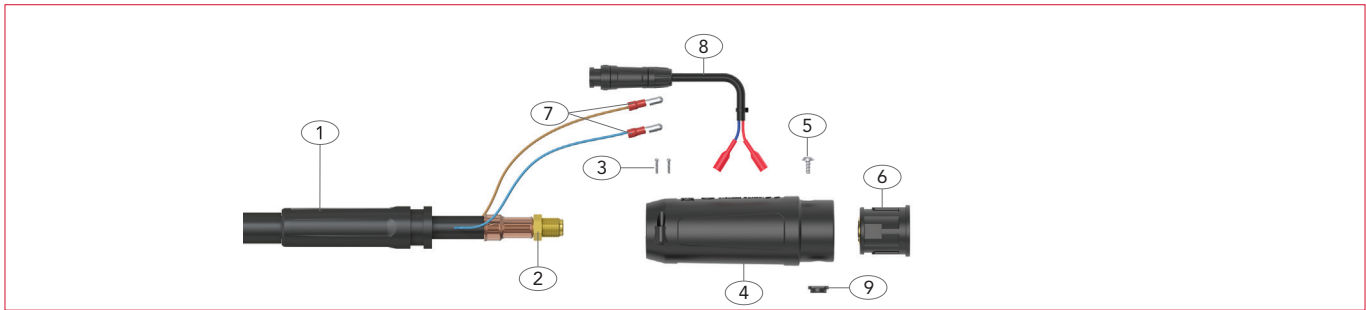


* Denotes torch package standard wear part set-up

Termination

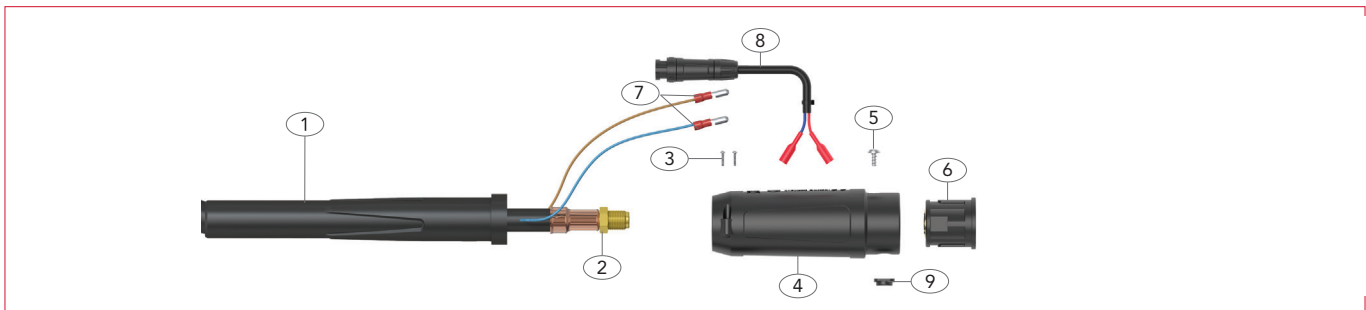
TR150

Part No.	Description
1 PC2841	Cable Support
2 PXL1542	Cable End Lock Nut
3 SCPSP1-1	Gun Plug Housing Screw
4 SCP2578HL-S	Gun Plug Housing
5 PBL1541	Gun Plug Screw
6 PECEM1575-2	Hybrid Plug Body
7 PB1522	Cable Termial Male
8 PQF-SW	Male Switch Wire Plug
9 SCP2578-SP1	Housing Stopper

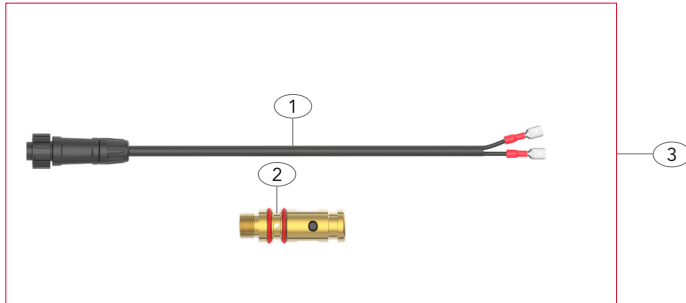


TR200/300/400

Part No.	Description
1 PPA3541	Cable Support
2 PXL1542	Cable End Lock Nut
3 SCPSP1-1	Gun Plug Housing Screw
4 SCP2578HL-L	Gun Plug Housing
5 PBL1541	Gun Plug Screw
6 PECEM1575-2	Hybrid Plug Body TWC 1-4
7 PB1522	Cable Termial Male
8 PQF-SW	Male Switch Wire Plug
9 SCP2578-SP1	Housing Stopper



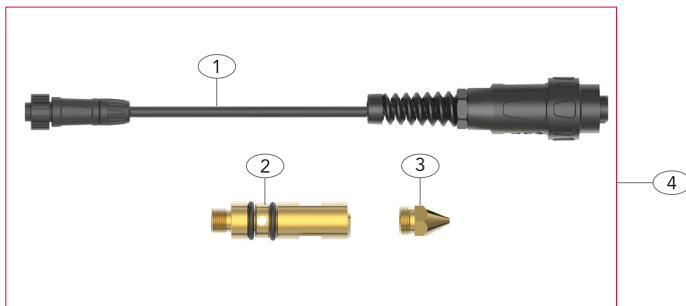
Tweco® Universal Kit



Direct Plug Connector

Part No.	Description
1 PECEL1575-SW-Q	Quick Fit Switch Wire Assembly
2 PECET1575-T-1	Tweco® 1-4 Power Pin
3 PECET1575K-T-Q	Quick Fit Connector Kit Complete

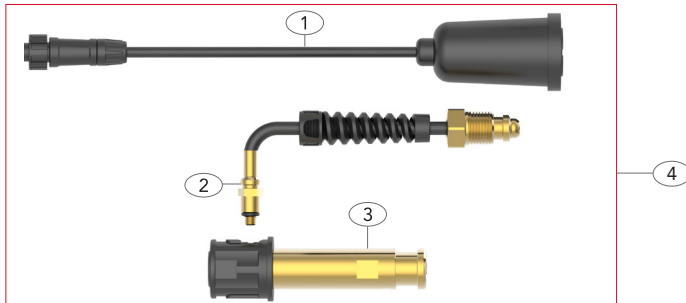
Miller® Universal Kit



Direct Plug Connector

Part No.	Description
1 PECEM1575-SW-Q	Quick Fit Miller® Plug Assembly
2 PECEM1575-T-1	Miller® Power Pin
3 PML1570	Wire Guide 0.35"-1/16"
PML1571	Wire Guide 5/16"-3/32"(Option)
4 PECEM1575K-T-Q	Quick Fit Connector Kit Complete

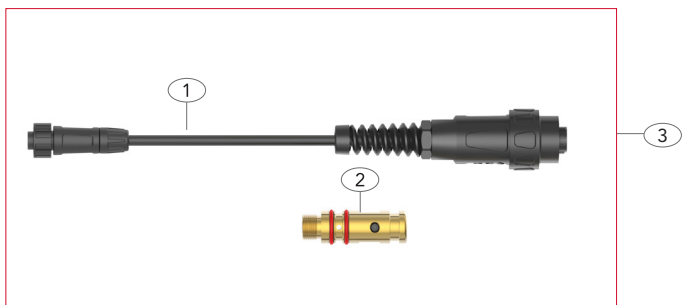
Lincoln® Universal Kit



Direct Plug Connector

Part No.	Description
1 PM16725-Q	Quick Fit Lincoln® Plug Assembly
2 PECEL1575-G	Lincoln® Gas Tube Assembly
3 PECEL1575-T	Lincoln® Power Pin
4 PECEL1575K-T-Q	Quick Fit Connector Kit Complete

LPW Universal Kit



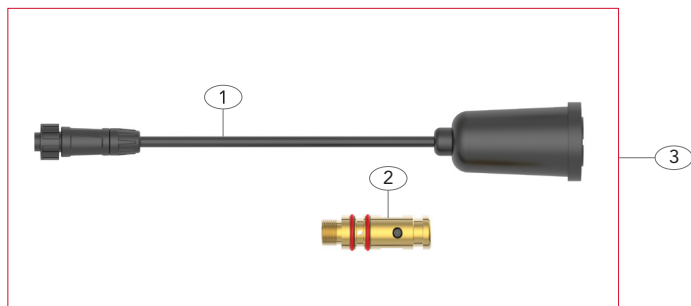
Direct Plug Connector

Part No.	Description
1 PECEM1575-SW-Q	Quick Fit Miller® Plug Assembly
2 PECET1575-T-1	Tweco® 1-4 Power Pin
3 PECEW1575K-T-Q	Quick Fit Connector Kit Complete



Universal Set-up Guide
A simple step by step guide

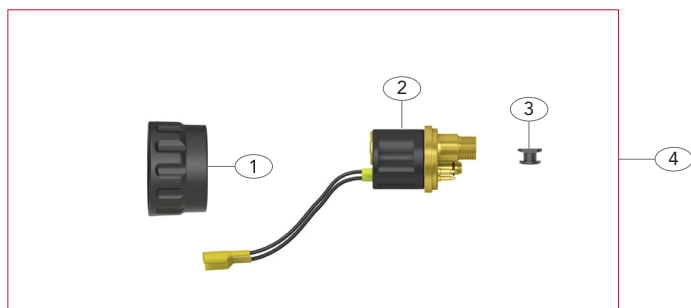
LPB Universal Kit



Direct Plug Connector

Part No.	Description
1 PM16725-Q	Quick Fit Lincoln® Plug Assembly
2 PECET1575-T-1	Tweco® 1-4 Power Pin
3 PECEB1575K-T-Q	Quick Fit Connector Kit Complete

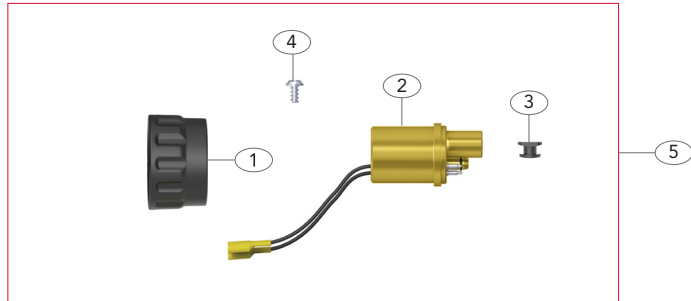
Euro Universal Kit-TR150/200/300



Direct Plug Connector

Part No.	Description
1 PC1519-S	Gun Plug Nut
2 PST-CE425-10K	Gun Plug Body
3 SCP2578-SP2	Housing Stopper
4 PST-CE425-10K-Q	Quick Fit Connector Kit Complete

Euro Universal Kit-TR400



Direct Plug Connector

Part No.	Description
1 PC1519-S	Gun Plug Nut
2 PST-E425-10K	Gun Plug Body
3 SCP2578-SP2	Housing Stopper
4 PB1526	Gun Plug Screw
5 PST-E425-10K-Q	Quick Fit Connector Kit Complete



Universal Set-up Guide
A simple step by step guide



JINAN UNIARC WELDING TECHNOLOGY CO., LTD

13A Zhangjin Comprehensive Bonded Zone
33688, Jing Shi Dong Road
Jinan Area of China (Shandong) Pilot Free Trade Zone
Jinan 250102, P.R. China

Tel: +86 531 88239823

Website: www.uniarctorchology.com

Email: info@uniarctorchology.com

MPP010 / V.2024.02